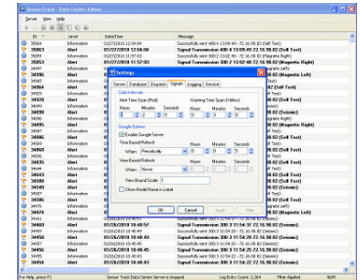


SensorTrack Data Center is a high performance enterprise level database system. This application has been designed to extend and enhance the capabilities of the SensorTrack Relay Server software. SensorTrack Data Center can be deployed adjacent to the Relay Server or on a remote computer via Intranet or Internet.

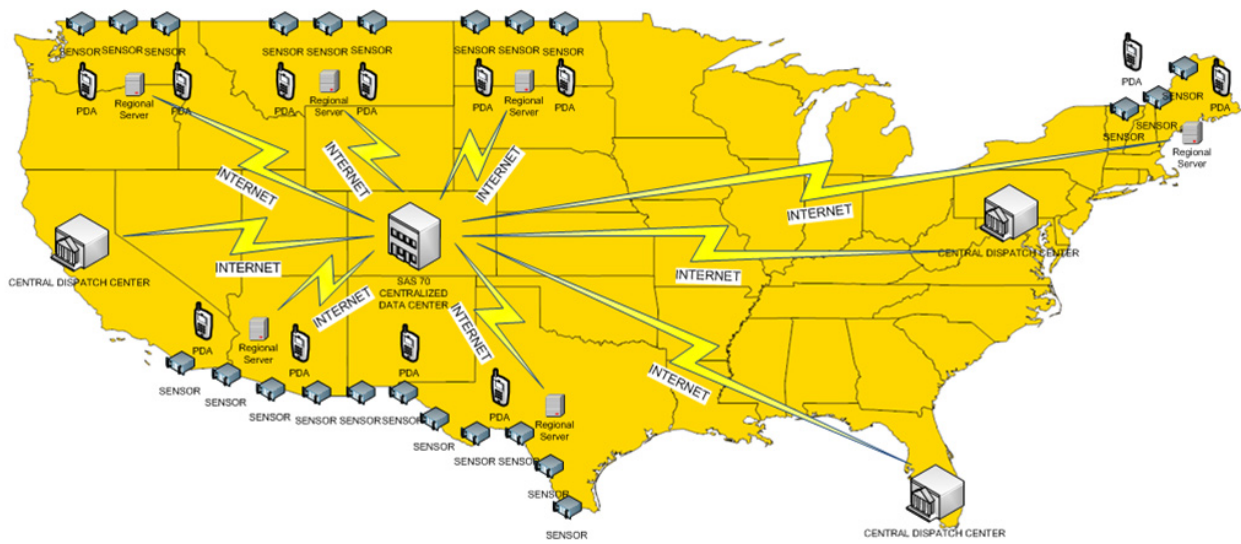
The SensorTrack Relay Server software forwards sensor alerts to the SensorTrack Data Center where all data can be viewed in a common operating picture. It is possible to deploy Ground Scout sensors over wide geographic areas (counties, states, countries). The result is a single enterprise view of all sensors deployed over that combined area using this application.

Users can access the data via third party tools such as web browsers, ESRI ArcMap and Google Earth. Detailed sensor alerts and daily state of health reports are generated and sent via automated signal notifications through SMS and email to end users. This seamless interactive visual tool features robust storage capabilities and intuitive user interfaces. Sensor alerts are stored in the database for future comparison and analysis.



The SensorTrack Data Center is your one stop location to record new network sensors and direct email alerts to end users. This user friendly format makes it easy to custom format sensor alerts to individual groups according to their assignments. Typically, user groups include tactical responders, supervisors, and maintenance personnel. Each group may receive alerts from a single sensor or several sensors in a specific area.







MULTI-TIER VORTEX SENSOR NETWORK
PHYSICAL DEPLOYMENT



LEGEND:

-  **GOVERNMENT BUILDING** – Remote patrol headquarters and dispatcher using central database for command and control decision making
-  **SAS 70 COMPLIANT DATA CENTER** – Central database and application servers for sensor data aggregation, analysis, storage and dissemination

-  **VORTEX SENSOR** – Seismic, magnetic and infrared sensor network creating virtual detection network
-  **REGIONAL COLLECTION SERVER** – Local data collection server used to capture sensor alerts and forward to central database servers

-  **PERSONAL DEVICE** – Mobile unit for field personal to capture local and remote sensor alerts and to view complete common operational picture
-  **INTERNET WIRE LINE** – High speed / high bandwidth network connections to central data center enabling universal access to entire sensor web

- OVERVIEW:**
1. Vortex units send data to regional servers within their respective radio ranges.
 2. Regional servers collect sensor data via RF signal and then forward data via Internet to centralized database center.
 3. PDA users view sensor alerts via local RF signal and Internet access to central database center.
 4. Responders connect to central database and monitor events and dispatch commands.